



The

# Ideal Home

₹120

The Ideal Home and Garden, November 2016 Vol 11 Issue 1

and Garden

# 10<sup>th</sup>

Anniversary

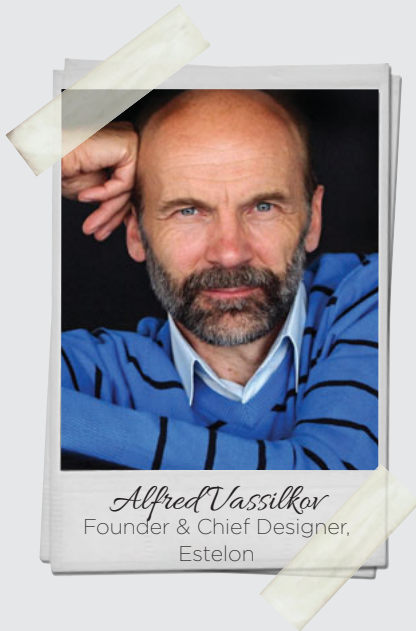
*Trend Forecast*  
Futuristic Kitchen  
&  
Bathroom  
Designs

**Women  
in Bloom**  
Inspiring  
Gen X Female  
Entrepreneurs

# International Spotlight

A Peek into  
Real Homes





**My design journey...** It started when I was quite young. During my schooling, I found sketching and drawing quite interesting and I participated in various competitions. This eventually led to becoming a designer of the top brand stereo radios and speakers.

**Most important role as a designer...** A sense of harmony in everything I do. This is a combination of emotions with function and engineering. Estelon is designed for homes.

**On bringing together comfort and uniqueness...** Functionality is key to create unique yet comforting products. Loudspeakers are not only meant to play good music but simultaneously they stay in your home as a nice design to become a piece of art for home interiors.

**Choosing colours for each design...** While making decisions about colours, it is important to test the product presentation under different lights and from different angles while making sure there is a sense of harmony in all aspects.

**On deciding the material for each design...** Materials depend on the technology used and required, followed by usability and finally texture and tactile aspects which are essential in adding another unique aspect to the products.

**I am currently working on ...** New project ideas. It is always an interesting challenge considering rapid developments in technology and availability of new materials, which makes it essential to accumulate and understand new possibilities before thinking about new creations.

